

# AM-R Series: (Used with raised cover only) Aluminum Hinged Front Panels (HFP)

## Features:

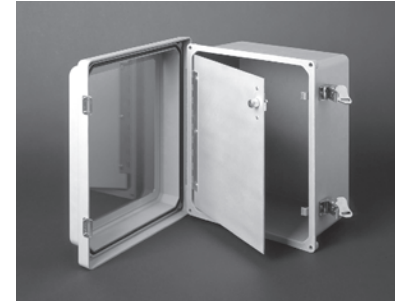
- Panels designed to offer both a professional instrumentation display and a protective covering for electric wiring inside the enclosure
- Completely field-installable panel design with no required enclosure modifications
- Latch design secures panel in place with one-quarter turn
- One-half-inch adjustability up or down
- For use with raised cover enclosures from 6" x 6" through 30" x 24"
- Panel modifications available include: cut-in holes, and screen printing
- Compliant with RoHS directive

### AM-R JIC SERIES:

Part No.	Panel Dimension
HFP66	5.60 x 5.60 x .09 142mm x 142mm x 2mm
HFP86	7.50 x 5.62 x .09 191mm x 143mm x 2mm
HFP108	7.50 x 9.50 x .09 191mm x 241mm x 2mm
HFP120	9.50 x 11.50 x .09 241mm x 292mm x 2mm
HFP142	11.50 x 13.50 x .09 292mm x 343mm x 2mm
HFP164	13.00 x 15.13 x .09 330mm x 384mm x 2mm
HFP186	15.38 x 17.25 x .09 391mm x 438mm x 2mm
HFP206	14.94 x 18.88 x .09 379mm x 480mm x 2mm

### AM-R CONTROL SERIES:

Part No.	Panel Dimension
HFP2420	19.38 x 23.25 x .09 492mm x 591mm x 2mm
HFP2424	23.38 x 23.25 x .09 594mm x 591mm x 2mm
HFP3024	23.38 x 29.25 x .09 594mm x 743mm x 2mm



# AMU Series: Aluminum Hinged Front Panels (HFPU)

## Features:

- Panels designed to offer both a professional instrumentation display and a protective covering for electric wiring inside the enclosure
- Completely field-installable panel design. Installation instruction sheet included.
- Latch design secures panel in place with one-quarter turn
- For use with enclosures from 6" x 6" through 20" x 16"
- Panel modifications available include: cut-in holes, and screen printing
- Compliant with RoHS directive

### AMU JIC SERIES:

Part No.	Panel Dimension
HFPU66	5.87 x 5.64 x .09 149mm x 143mm x 2mm
HFPU86	7.73 x 5.91 x .09 196mm x 150mm x 2mm
HFPU108	7.87 x 9.64 x .09 200mm x 245mm x 2mm
HFPU120	9.86 x 11.64 x .09 250mm x 296mm x 2mm
HFPU142	11.86 x 13.64 x .09 301mm x 346mm x 2mm
HFPU164	13.86 x 15.64 x .09 352mm x 397mm x 2mm
HFPU186	15.99 x 17.90 x .09 406mm x 455mm x 2mm
HFPU206	15.55 x 19.65 x .09 395mm x 499mm x 2mm



PANELS



Order Today: 419-636-4217, Fax: 419-636-2450, e-mail: sales@alliedmoulded.com