

Enclosure Accessories

ENCLOSURE PRINT POCKET

PART NO.: **AMPRINTPOCKET**

- Easy to install in the field
- Store prints or other important documents inside the enclosure
- Grey polystyrene print pocket for large JIC Series, Control Series, and Empire Series enclosures
- Two-sided adhesive tape pre-applied to print pocket
- Size: 9.375 in (H) x 10.375 in (W) x 1.045 in (D)
238 mm (H) x 264 mm (W) x 27 mm (D)



ENCLOSURE VENTILATION KIT

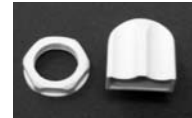
PART NO.: **AMVENTSM & AMVENTLG**

- Grey polyamide material
- Use with JIC Series enclosures - Install two per enclosure
- Installation instruction sheet included
- Seal included in kit to ensure raintight enclosure protection
- Two vents per kit for field installation allows for sufficient air circulation and prevents condensation and moisture

Overall Dimensions:

AMVENTSM; 1 in (25 mm) x 1.125 in (29 mm) and requires .75 in (19mm) through hole

AMVENTLG; 2 in (51 mm) x 2.675 in (68 mm) and requires 1.156 in (29 mm) through hole



EXHAUST FILTER KIT

PART NO.: **AMPFA1000, AMPFA2000, and AMPFA3000**

- Three sizes covering large JIC Series, Control Series, and Empire Series enclosures
- Non-metallic made from strong ABS-FR, self-extinguishing material (UL 94 VO)
- Snap-in design allows for hardware-free installation
- Gaskets included provide a NEMA 12 seal against the enclosure
- Filter cover comes standard in light grey RAL 7035 color
- Installation instruction sheet included
- Replaceable filter material provides for 73% filtration efficiency
- Filter density is standard 150 (g/m²)
- See back page for more ordering information



Enclosure Accessories

EXHAUST FILTER KIT CONT.

PART NO.: **AMPFA1000, AMPFA2000, and AMPFA3000**

Size Information:

- AMPFA1000; 4.133in (105mm) x 4.133in (105mm) x 0.39in (10mm)
- AMPFA2000; 5.905in (150mm) x 5.905in (150mm) x 1.06in (27mm)
- AMPFA3000; 9.842in (250mm) x 9.842in (250mm) x 1.18in (30mm)

Note: There are other thermal management accessories available upon request. These include: Fans, replacement filters, heaters, air-conditioners, and thermostats. Please contact factory for more information.



ENCLOSURE KEYLOCK KITS

PART NO.: **AMKEYLOCKFC, AMKEYLOCKRC, and AMKEYLOCKRCHFP**

- AMKEYLOCKFC keylock assembly kit for (F)flat (C)cover enclosures 6x6 through 20x16 (AM Series)
- AMKEYLOCKRC keylock assembly kit for (R)raised (C)cover enclosures 6x6 through 30x24 (AM-R Series)
- AMKEYLOCKRCHFP keylock assembly kit for (R)raised (C)cover enclosures with a (H)hinge (F)front (P)panel installed in enclosures 10x8 through 30x24 (AM-R Series)
- Kits include: Two keys, keylock assembly, cam, dust cover, lock bracket, and hardware
- Field installable while requiring only a round hole to be cut into the cover
- Keylocks are sold with a self locking nut for tight and secure assembly
- Just a 1/4 turn rotation is required to lock the enclosure cover
- Installed keylock assemblies have been tested and pass the NEMA 4X watertight test
- Manufactured components are RoHS compliant (Restriction of Hazardous Substances)



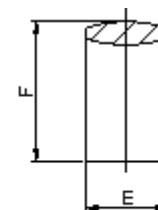
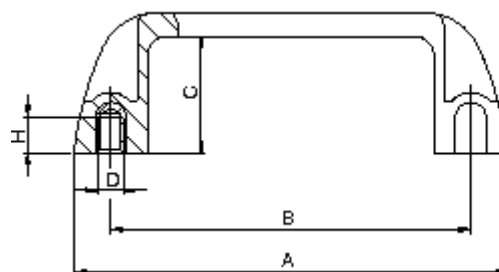
PULL TYPE HANDLE

PART NO.: **AMHDL001**

- Handle: Glass fiber reinforced nylon
- Finish: Black matte
- Screws and lock washers included

Dimensions

- A: 5.47 in (139 mm)
- B: 4.61 in (117 mm)
- C: 1.34 in (34 mm)
- D: 1/4 - 20
- E: 1.02 in (26 mm)
- F: 1.61 in (41 mm)
- H: .35 in (9 mm)



Order Today: 419-636-4217, Fax: 419-636-2450, e-mail: sales@alliedmoulded.com