

PART NAME	NON-METALLIC ENCLOSURE (STYLE B)	PART No.	NBB-10241 & NBB-10261 & NBB-22241	REV. DATE	3-18-10
-----------	----------------------------------	----------	-----------------------------------	-----------	---------

ALL ENCLOSURES MEET NEMA TYPE 1, 2, 4, 4X, 12 & 13 AND IEC529-IP65

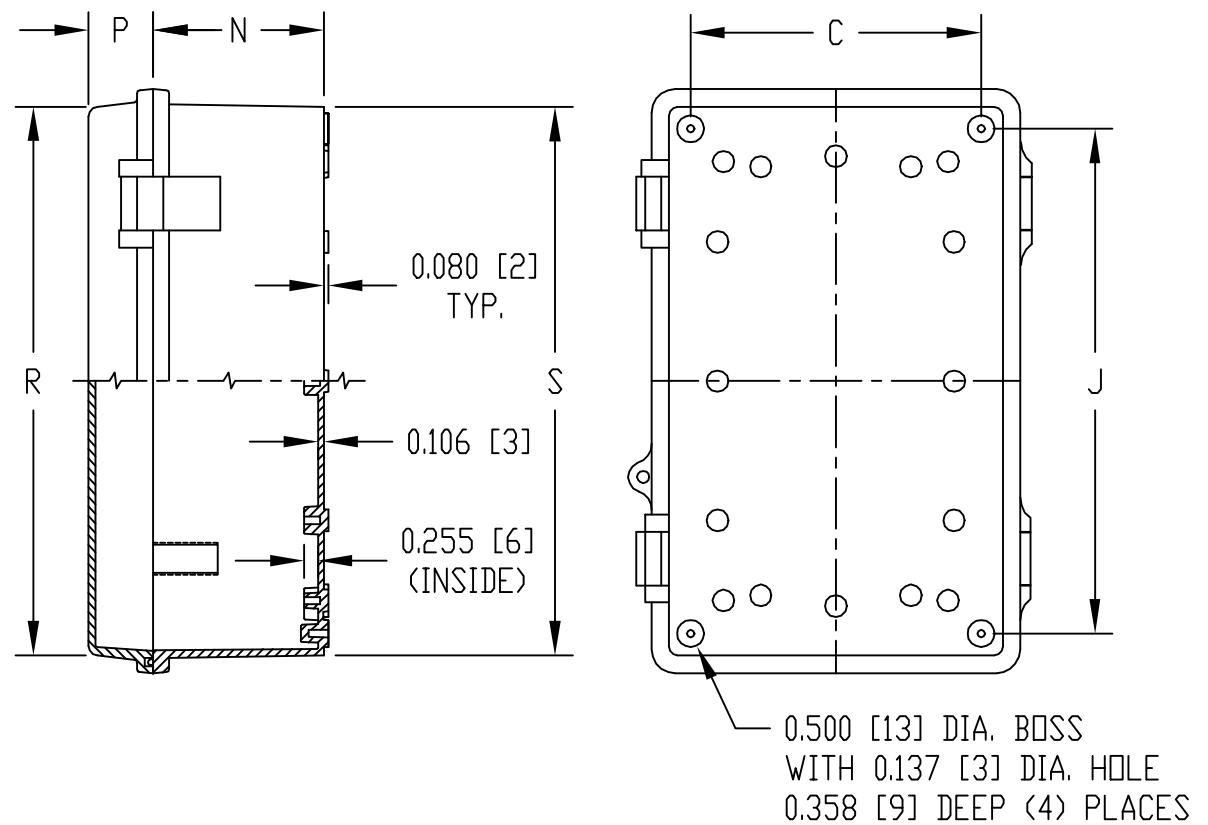
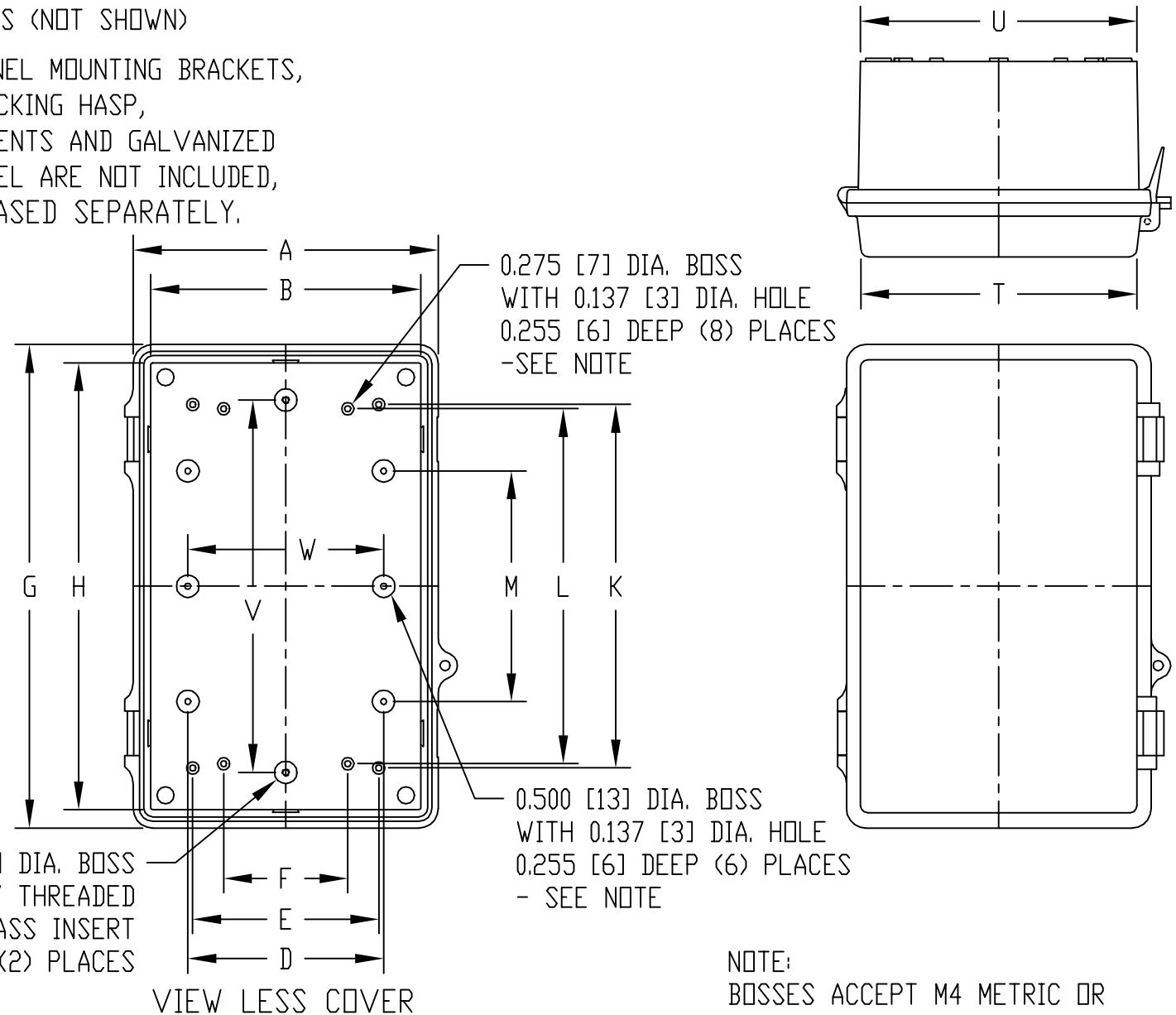
SUPPLIED WITH (4) SMALL WALL MOUNTING BRKTS. (REF. NBX-10920) & (4) M5x0.8 x 12mm LG. TRUSS HD. SELF-TAPPING SCREWS (NOT SHOWN)

INTERNAL HINGED PANEL MOUNTING BRACKETS, STAINLESS STEEL LOCKING HASP, AIR AND MOISTURE VENTS AND GALVANIZED STEEL INTERNAL PANEL ARE NOT INCLUDED, BUT CAN BE PURCHASED SEPARATELY.

**MATERIAL:**  
**UL508-4X INDOOR VERSION**  
 SOLID BODY & COVER \_\_\_\_\_ LIGHT GRAY ABS/PC BLENDED PLASTIC  
 UL94-5VB FLAMMABILITY RATING  
 CLEAR COVER \_\_\_\_\_ POLYCARBONATE PLASTIC  
 UL94V-0 FLAMMABILITY RATING  
 UV STABILIZED

**ABS VERSION**  
 SOLID BODY & COVER \_\_\_\_\_ LIGHT GRAY ABS  
 UL94-HB FLAMMABILITY RATING

LATCHES & HINGES \_\_\_\_\_ NON-METALLIC  
 WALL MOUNTING BRACKETS \_\_\_\_\_ STAINLESS STEEL  
 COVER INCLUDES GRAY POLYURETHANE GASKET.



NOTE:  
 BOSSES ACCEPT M4 METRIC OR #8 STD. SHEET METAL SCREWS x 0.250 [6] LG. (NOT SUPPLIED)

DIMENSIONS = INCHES  
 [MILLIMETERS]

NOTE: ALL DIMENSIONS HAVE ±0.039 [±1] TOLERANCE UNLESS OTHERWISE SPECIFIED

UL508-4X INDOOR VERSION			ABS VERSION			DIMENSIONS																			
PART NO.			PART NO.			A	B	C	D	E	F	G	H	J	K	L	M	N	P	R	S	T	U	V	W
SOLID COVER	CLEAR COVER	SOLID COVER																							
NBB-10241	NBB-10261	NBB-22241	6.780	6.000	5.350	4.352	4.138	2.765	10.750	9.940	9.294	8.085	7.896	5.129	3.142	1.190	10.100	10.090	6.140	6.150	8.283	4.360			
			[172]	[152]	[136]	[111]	[105]	[70]	[273]	[252]	[236]	[205]	[201]	[130]	[80]	[30]	[257]	[256]	[156]	[156]	[210]	[111]			